

More info: zappiti.uservice.com/knowledgebase

How to Create a Movie Collection in Zappiti Video

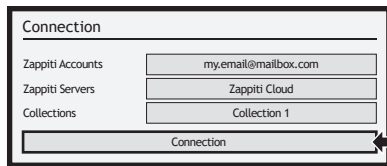
Before starting, you must create a folder named **MOVIE** on your HDD. Then, place all your movies inside this folder. If you have TV shows, place them in a dedicated folder named **SERIES** or **TV SHOWS**.

Movies

- On your NAS or HDD, please create a movie folder named **MOVIES**. Place all your movie files in it.
- Your files should be named with the title of each movie. For example, the file of the movie "Metropolis" should be named "Metropolis.mkv". You can create subfolders in the folder **MOVIES** if you want.

TV Shows / TV Series

- On your NAS or HDD, please create a folder named **SERIES** or **TV SHOWS**.
- Then, create a subfolder for each TV Show / Series. You can create a subfolder for each season if you want. Then, place all your TV Show episodes in it.
- Your episodes must be named as: "Serienname s01e01" ("Serienname 1x01" also supported). For the special episodes, please name them as: "s00e01".



Start your Zappiti. On the main page, click on the first button named **VIDEO**. Choose your language and enter your login. If you do not have any Zappiti account, please report to page 11.

Then, click on the button **Connection** located on the bottom of the window.

On the **Folder configuration** window, please click on **Add a folder containing movies** (or TV Shows). If your files are located on a local storage, please click on **Local drives**. If you want to share your video contents with others Zappiti players through your local network, click on **Zappiti Share**. Then click on the storage name. Next, browse it and go inside the Movies (or TV Shows) folder. Finally, when you are in the folder **MOVIES** (or TV SHOWS) click on **OK** button.

WARNING! When you are in the folder containing your movies or TV Shows **DON'T EXPLORE THE MOVIE FOLDERS!** Just press **OK** button. If not, Zappiti will analyse only one movie instead of all the movies. You should add your "MOVIES" folder. Do not add a folder containing only one movie.

Your folder will be added in the MOVIE folder list (or TV SHOW). You can check the path by looking on the **generated path** located between "MOVIES" button and "Edit" button. Your path should stop to the "MOVIES" folder (or "FILMS" folder). If your path is incorrect, you can modify it by using the **Edit** button. Press **Delete** button to delete the folder from Zappiti. (Don't worry! Your movies will not be deleted). If you want to add another folder containing movies or TV Shows, please click on the dedicated button.



Then, press **RETURN** if you don't want to add another folder containing movies. Zappiti will start to scan your folders and analyse your video contents. You can see the current scan task in a dedicated panel. To close the current task panel, press the **RETURN** button of your RC. If you close it, you can display it again through the **MENU** button of your RC.

Done! Now you can enjoy your Zappiti collection! To access to the settings panel again, press the **MENU** button on your remote control. In the settings panel, you'll find many options such as: language (GUI and identification), translations, templates, top movie cover, glass effect, parental control, identification on startup and other options, terms to exclude, token and other account administration.

Please use the RC buttons **UP, DOWN, LEFT, RIGHT, OK, RETURN** to navigate through the player menu. Use the **MENU** RC button to show the list of available commands. Use the **INFO** RC button to show the INFO panel.

The Home Page features 3 main applications: **Zappiti Video, Zappiti Music** and **Zappiti Explorer**.

Zappiti Video

Zappiti Video is a media player, software and entertainment hub, featuring an impressive user interface with movie covers. With Zappiti Video, you can experience your entire movie and TV series collection, browse and play your titles from local and network storage media, view cast information, download subtitles, play trailers and much more.

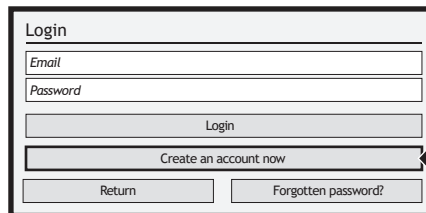
Zappiti Music

Zappiti Music is an app dedicated to music playback designed for Zappiti players. Listen to your favorite tracks, and manage your music collection in a simple way. With Zappiti Music you can play your favorite music stored anywhere on your home network or on a local drive connected to your Zappiti media player. With Zappiti Music, you can control your music playback through your Zappiti media player, from your smartphone or tablet (iOS or Android) without the need of TV. Select the Zappiti media player you want to control and manage your music collection directly from your tablet or smartphone.

Zappiti Explorer

Zappiti Explorer is a File Manager. You can easy explore and launch playback of your music, pictures and video content. But Zappiti Explorer is more than just a file explorer — it also provides many advanced multimedia features and a complete file management system.

Before to start using the Zappiti apps, you have to create a Zappiti account and register your device. First, please connect your media player to Internet through Wi-Fi or Ethernet. Please launch one app and select you language. Then, follow the on-screen instructions. If you have never used Zappiti before and if you don't have any Zappiti account, please click on **Create an account now**.



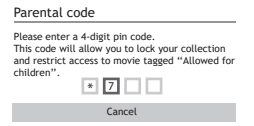
Click here to create a Zappiti account

Then, you'll be invited to enter your Zappiti Token. The token number is printed on a sticker located under the Zappiti case. You'll have to enter it only one time. Then, all the info of your account will be saved in the internal memory.

Note: If you do not have any Internet connection, you can explore your files using: **MyApps/Media Browser**.

Parental Control

To tag a movie as **Allow for children**, select a movie (or a group of movies), then press the **MENU** button on the RC and click on **Allow for children**. Then, enter a 4-digit pin code.



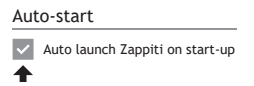
Personal Categories

By default, the movies and TV shows are automatically associated to categories. But you can create your own categories and associate manually your movies. To create a category, go the categories, then press **MENU** and click on **Create a categorie**. Then, enter a name and choose an icon. The contextual menu give also access to additional options such as: modify the position of the categories, edit or remove.



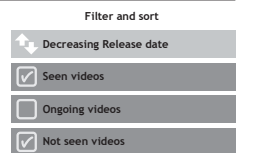
Zappiti On Start-Up

To activate this function, press **MENU**, then go to **Settings**, click on the **second tab** and switch **ON** the option in the list.



Filter and Sort

To sort your movies, press **MENU**, then go to Filter and sort. Then click on the **first item**. Then select the sorting: **A to Z, Z to A, Release date, Duration, Addition...** To filter your movies, please click the following options: **Seen, Ongoing, or Not seen**.



Subtitle Display Options

To change the subtitle display options such as color, position, or sync, press the **MENU** button on the remote control during video playback, then go to **Subtitle** and change the desired option. To change the vertical position of the Blu-ray subtitles (PGS), go to the **ADVANCE** section, then click on **PGS Subtitle Offset** and decrease or increase the vertical position of the subtitles. To add external subtitles, please use the same name of the video file as following: *Metropolis.mkv / Metropolis-en.srt / Metropolis-es.srt*

Third Party Control

You can control your Zappiti using third party devices such as Control4, Crestron, ProControl, RTI, Logitech, Pronto, ...

More info: zappiti.uservice.com/knowledgebase

User Support & Zappiti Db

For **User Support**, please contact us at: tickets@zappiti.uservice.com